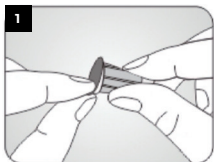


EASYDRIP READYGARD DUO
SAFETY INSULIN PEN NEEDLE



STEP 1

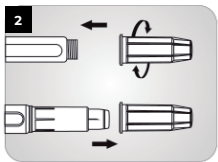
Peel off the sealing paper.



Do not touch the needle.

STEP 2

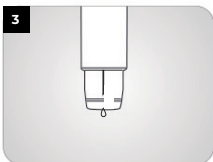
Screw onto the pen.



Pull the outer cap straight off.

STEP 3

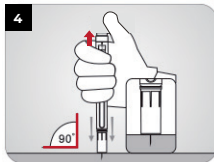
Purge the pen with the **needle down***.



**Otherwise, fluid may leak down the needle and onto the skin after injection*

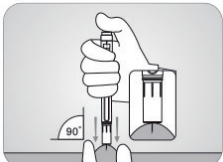
STEP 4

Hold the pen in the palm of your hand, thumb up.



Insert at a 90° angle.

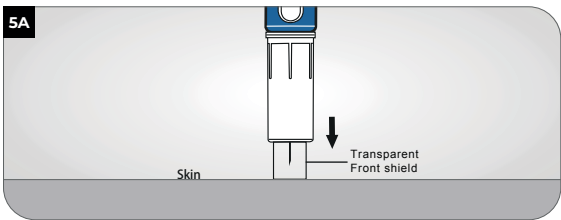
If little body fat or too much loose skin, use the 2.5cm pinch method



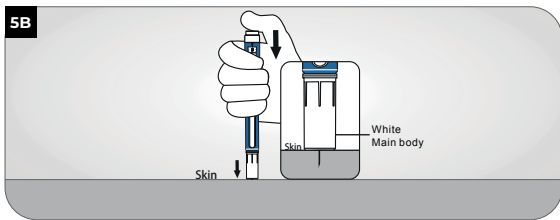
Avoids injecting into the muscle and creating pain and bruising

STEP 5

5A Insert the pen needle STRAIGHT into the skin in one continuous motion until the white main body touches the skin, apply light pressure.



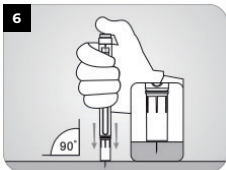
5B When the white main body is in full contact with the skin and the transparent front shield is fully retracted, this indicates that the **needle has reached the target depth**, allowing to inject the drug.



Note: There is no audible click at this stage—confirm visually.

STEP 6

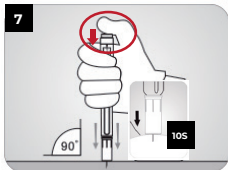
Inject the prescribed dose by pushing on the plunger **with your thumb** allowing you to remain stable.



Do not apply more pressure.

STEP 7

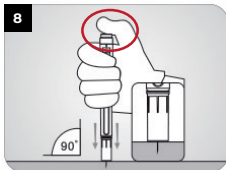
Maintain pressure on the plunger with your thumb and leave the needle in the skin for 10-15 seconds **after** injection.



** Recommended by pen manufacturers to ensure dose accuracy*

STEP 8

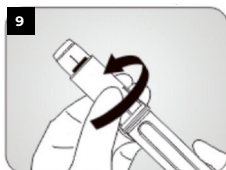
Keep pressure on the piston until the pen is completely withdrawn.* **When it clicks, the security system is triggered** and a red bar appears.



**Recommended by pen manufacturers to avoid pinching of subcutaneous tissues*

STEP 9

Unscrew the needle from the pen. A red shield is activated protecting the end that connects the needle to the pen.



Dispose of the used safe pen needle in a sharps container.